



MULTICARGO TERMINAL

T-MULT

**LOGISTICS PLATFORM
WITH INTEGRATED
SOLUTIONS**

CUSTOMER

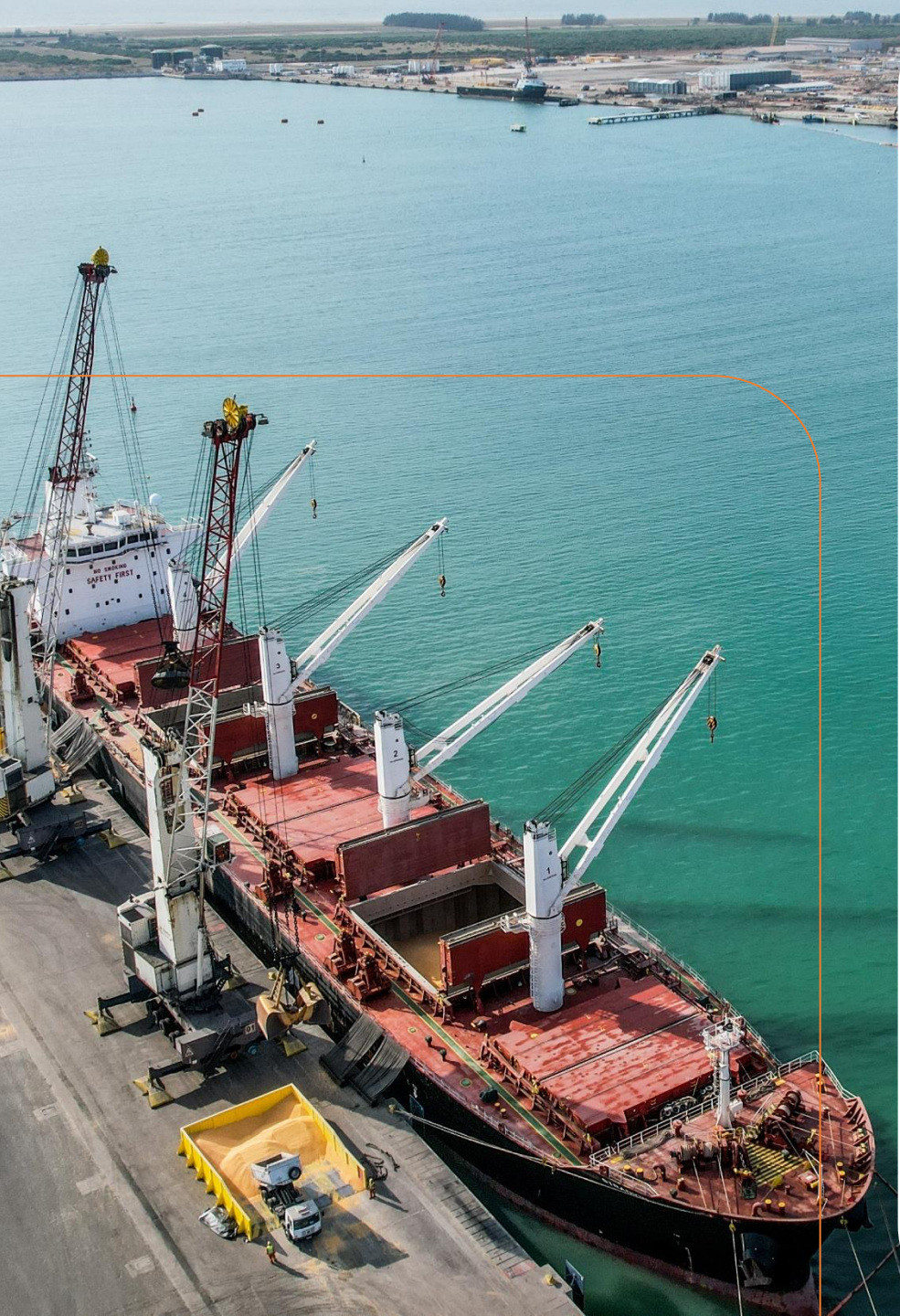
- Flexibility to develop customized logistics solutions
- Reliability and operational efficiency
- Safety and quality in operations
- Availability of ancillary services: water supply, crew changes and other customized services

EFFICIENCY

- Minimum waiting time for mooring and near-zero demurrage
- High productivity rate with “best in class” loading/discharge rate
- 100% private workforce

HIGH-LEVEL INFRASTRUCTURE

- Able to receive ships up to Panamax class (250m LOA x 13.1m draft)
- 780,000 m² of total area
- 360,000 m² of bonded area
- State-of-the-art equipment

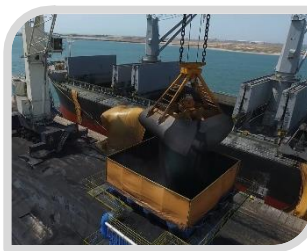


SOLUTIONS FOR YOUR CARGO

Handling know-how of solid bulk, general cargo and project cargo



O&G EQUIPMENTS



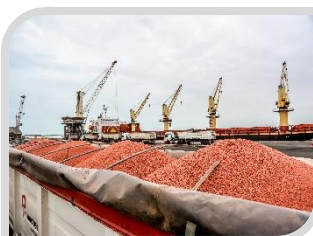
SOLID FUELS



SPODUMENE



PIG IRON



FERTILIZERS



GRAINS



YELLOW LINE



SALT

➤➤ **+2 million tons**
Handled in 2023

➤➤ **420,000 m²**
Ready for news expansions

➤➤ **+96,000 m²**
Storage yards in open area

➤➤ **20,000 m²**
Covered area to storage

QR Code:



billy